

# AI POWERED HIGH PERFORMANCE THERMAL SCREENING SOLUTION

## Screen X ST-40

High Accuracy &  
Multiple People  
Screening

### Overview

Faclon's Screen X ST-40 is a very powerful yet compact thermal screening solution with a thermal and RGB camera designed for screening people's temperature & centralized monitoring. It is equipped with AI powered facial tracking for accurate localization and tracking of people's temperature for quick and efficient isolation of feverish individuals without manual exposure of any personnel.

### Key Features



Contactless Solution



High Temperature Accuracy



Local Diagnostic Software



Quick Detection & Instant Alerts

# Solution Snapshot



## Multiple People Screening

Consist of high computation power & high resolution thermal camera that can support screening of up-to 12 people at once



## AI Powered Accurate Measurement & Instant Fever Detection

Proprietary artificial intelligence embedded on edge processor to accurately detect & isolate people with higher body temperature.



## Intelligent Alerts

local buzzer to quickly alert the nearby people in case of high face temperature. SMS & emails is sent to the concerned stakeholders. ERP integration is optional.



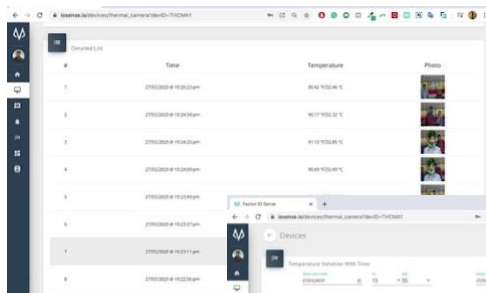
## Black Body Integration

To negate the effect of ambient, we provide black body that will be kept in the field of view of camera to auto correct & calibrate the temperature readings

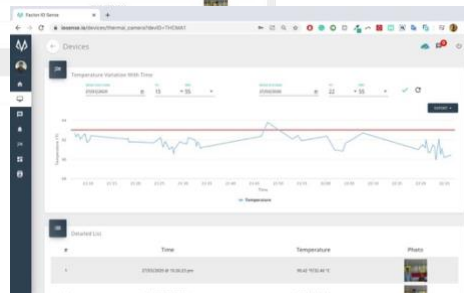


## I/O Sense Cloud Platform Integration

Centrally monitor & analyze all the photos, results, temperature trends, anomalies etc. captured from all the connected cameras installed at different sites.



List of all the screened people along with photos & results



Temperature profile of one camera with benchmarking

## Specifications

Communication	1x Gigabit Ethernet Port (Optionally POE)
Thermal Camera	VOx Uncooled Focal Plane Arrays 256×192 Pixel Thermal Camera Accuracy: +/- 0.5 °C Operating Distance: 0.5 – 3 meters FOV: 35° × 27° (H × V)
RGB Camera	1920×1080P
Time to Analyze	~ 1 Second
Automation	AI Powered Face Detection and Temperature Localization
Cloud Integration	I/O Sense IoT platform Integrated ( <i>Dashboards, reports, alarms, analytics and automation managed centrally</i> ) Signed URL File Upload SSL Secured MQTT & HTTPS Locally hosted web app for quick and efficient configurations
Video streaming	IP Streaming RTSP
Alarms/Notifications	Hooter option for Alerts Configurable Set Points
FOTA (Firmware Over the Air)	Yes
Enclosure	Complies to IP-65
Mounting Table Top	Wall Mounting / Tripod Mounting
Operating Temperature	-20°C to 35°C, Storage: -25°C to 80°C
Power Input	230V AC/12V DC
Dimension	246 mm × 101 mm × 81 mm
Weight	Approx. 1.0 kg

Note: We pursue a policy of continuous research and product development. Specifications and features are subject to change without notice.